



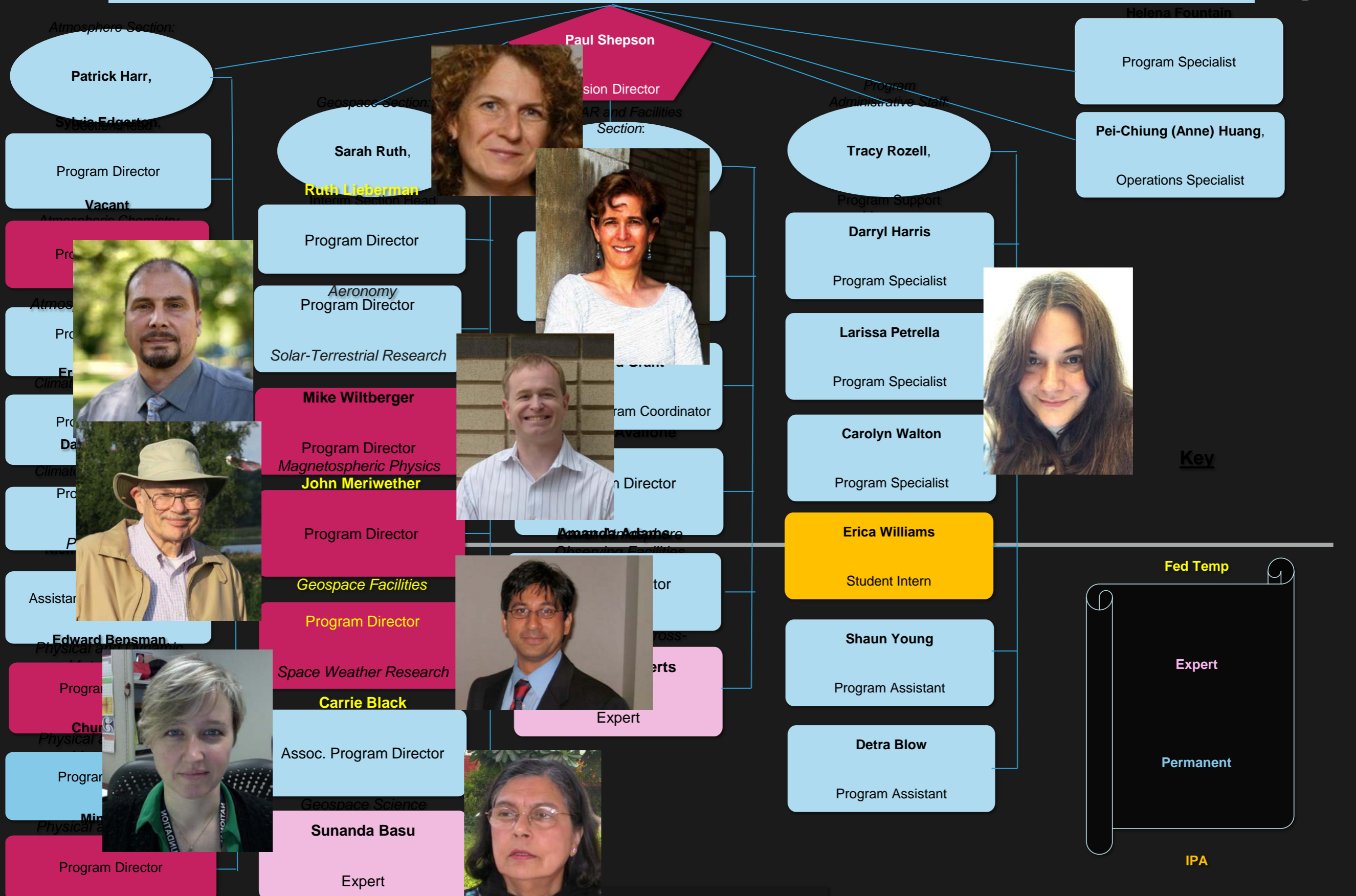
Recent Doings of Geospace Science at NSF

John Meriwether

Geospace Facilities Program Director
National Science Foundation



DIVISION OF ATMOSPHERIC AND GEOSPACE SCIENCES



❑ 2017 has been a year of major changes in AGS/GS

❑ And more changes will be taking place in the next year

❑ Updates regarding the Major Facilities in GF:

Arecibo, Sondrestrom, AMISR, CRRL

❑ One issue re grant management

Review of GS timeline

- GS Portfolio Review Panel (PRP) met numerous times in 2015 and delivered its report to AC/GEO in April 2016.
- National Academy of Science Assessment Panel (“**A review of the review**”) provided external examination of the PRP review process and delivered its report to AC/GEO, 31 January 2017
- GS Response Report to these two reports was presented to the AC/GEO in April 2017 and is available on the NSF web site (*Google ags/update*)



What's
the
plan?

FROM REPORTS TO PLANS

- ✓ Create strategic vision based on recommendations
- ✓ Engagement with community on implementation
- ✓ Recurring portfolio reviews every 3-4 years



GS Responses to PRP & NASAR
reports

FACILITIES

PRP RECOMMENDATIONS FOR FACILITIES

- ▶ Reduce funding for Arecibo from \$4M/year to \$1.1M/year
- ▶ Divest from Sondrestrom by 2020: **lifecycle issue**
- ▶ Continue AMISR, but with separate management for the two sites
- ▶ CRRL LIDAR sites should not be treated as facilities but PI-managed instruments



ARECI

AO located on Federal property so EIS is required for any major change

- ▶ AST & AGS joint management
 - ▶ Draft environmental impact statement released October 2016
 - ▶ FEIS and RECORD OF DECISION expected late summer 2017
 - ▶ Decision on auxiliary aeronomy instrumentation TBD when future of AO is known
-
- Solicitation (17-538) for science partnership FEIS preferred option
 - Proposals were due April 25, 2017
 - Budget profile in solicitation adopts portfolio review recommendation of \$1.1 M (AGS) by fifth year of new award

SONDRESTROM



- ❑ Facility to be de-scoped in regard to data collection operations of ISR instrument
- ❑ Plan to explore partnership options
- ❑ Site-visit panel planned late July 2017
- ❑ Science utility of auxiliary instruments to be evaluated- will determine level of data collection operations: possibly 10-15% of present observing schedule
- ❑ Also site panel study to include comparison with EISCAT instrument roster at Svalbard

AMISR

- ❑ Re-competing due to NSF policy set by NSB – 10 years since start of M&O phase of lifecycle operations
- ❑ Solicitation(17-539) for separate proposals for PFISR and RISR
- ❑ Preliminary proposals submitted 1 May 2017
- ❑ This strategy allows for the option of relocation of PFISR to another location of geophysical interest without any tie to RISR
- ❑ also allows strong focus on science issues for each site.



Shout-out to SRI International for high quality of professional service to ISR facilities (Sondrestrom, Arecibo, and AMISR)

and to John Kelly and Anja Stromme for their combined consistent leadership and wonderful service to the aeronomy community over 34 years of Sondrestrom operations. (other names: Mary McCready, Craig Heinselmann and Jeff Thayer)





CONSORTIUM OF RESONANCE & RAYLEIGH RADARS - CRRL

- ❑ Not being renewed as a facility
- ❑ Three separate proposals received in the Aeronomy program for sodium W&T resonance lidar systems located in Chile, Utah, and Alaska
- ❑ Panel review March 2017
- ❑ Level of support will be evaluated in the context of the Aeronomy program



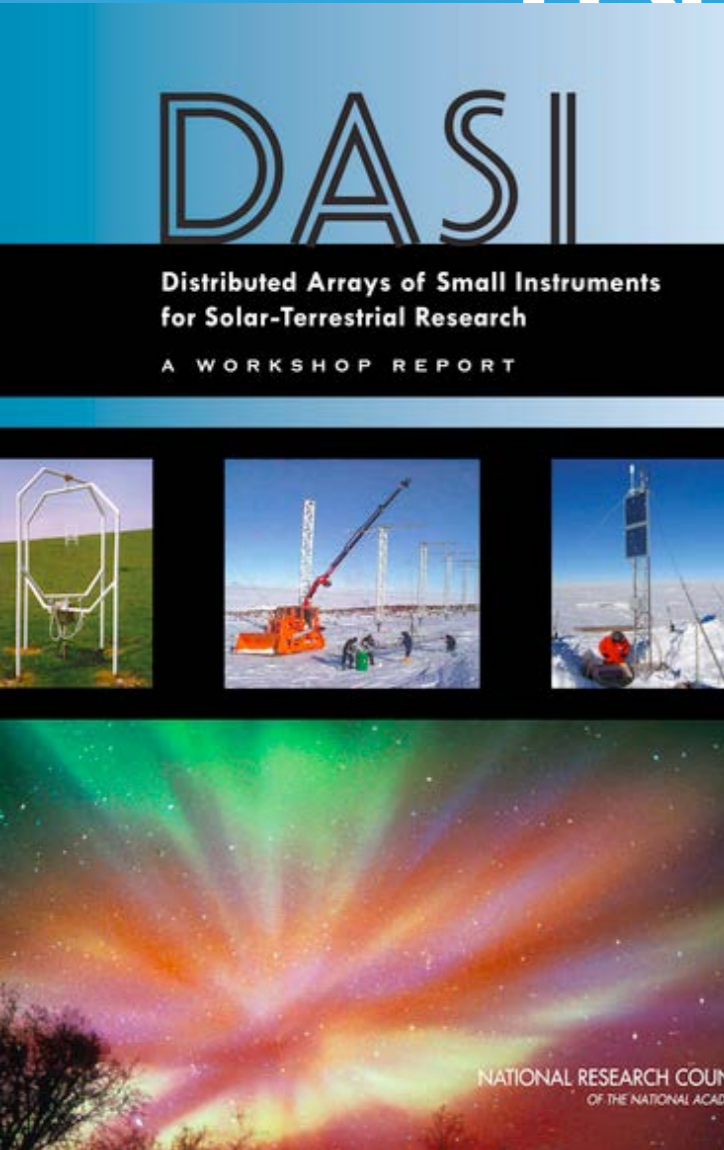
RESPONSE TO THE GEOSPACE
PORTFOLIO REVIEW &
NAS ASSESSMENT REPORTS

EVOLUTION OF
FACILITIES

NEW FACILITY INVESTMENTS



- Joining the international EIS/T collaboration: **Contact established to discuss terms**



New I&V Program & new DASI Facilities:

Both need further definition, e.g., through community workshops

Mid-scale and MREFC:

- **NSF-wide considerations**
- Continued efforts over time with workshop inputs. Quo Vadis



RESPONSE TO THE GEOSPACE
PORTFOLIO REVIEW &
NAS ASSESSMENT REPORTS

GRANTS
PROGRAMS

INSURE STRONG AWARDS PROGRAM



MORTGAGE PROBLEM: 2/3 OF ANNUAL BUDGET EACH YEAR PRE-COMMITTED

- The result of many years of flat budgets & strong proposal pressure
- **Severely limits flexibility to accommodate larger awards and new activities**
- Risks violating NSF policy
- **Plan: reduce out-year expenses in programs**
- Belt-tightening for several years:
fewer and smaller awards
- **Remove deadlines and focus targeted programs to reduce proposal numbers**
- Achieve better flexibility in budget allocations between programs

In closing, several points:

2017-2018 a year of transition in which tough decisions have been made with more still to be made.

The PRP and NASAR reports have provided excellent guidance for the path forward.

Those of us in the GS section are very grateful to all of the panelists that served on these panels and rendered their value judgements on these issues.

Thank you!

www.nsf.gov/ags/updates/index.jsp

More content but no time. Please see GS response report available by download from the NSF/AGS update web site.

Questions?